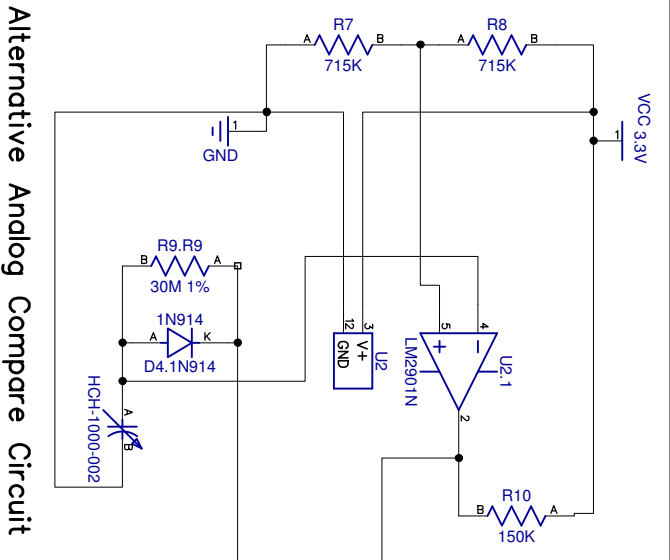
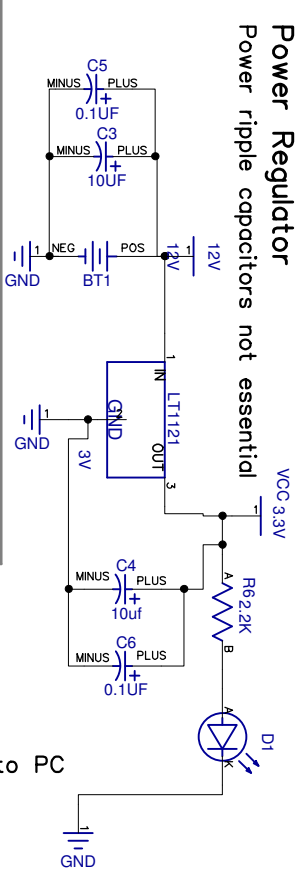


Power Regulator

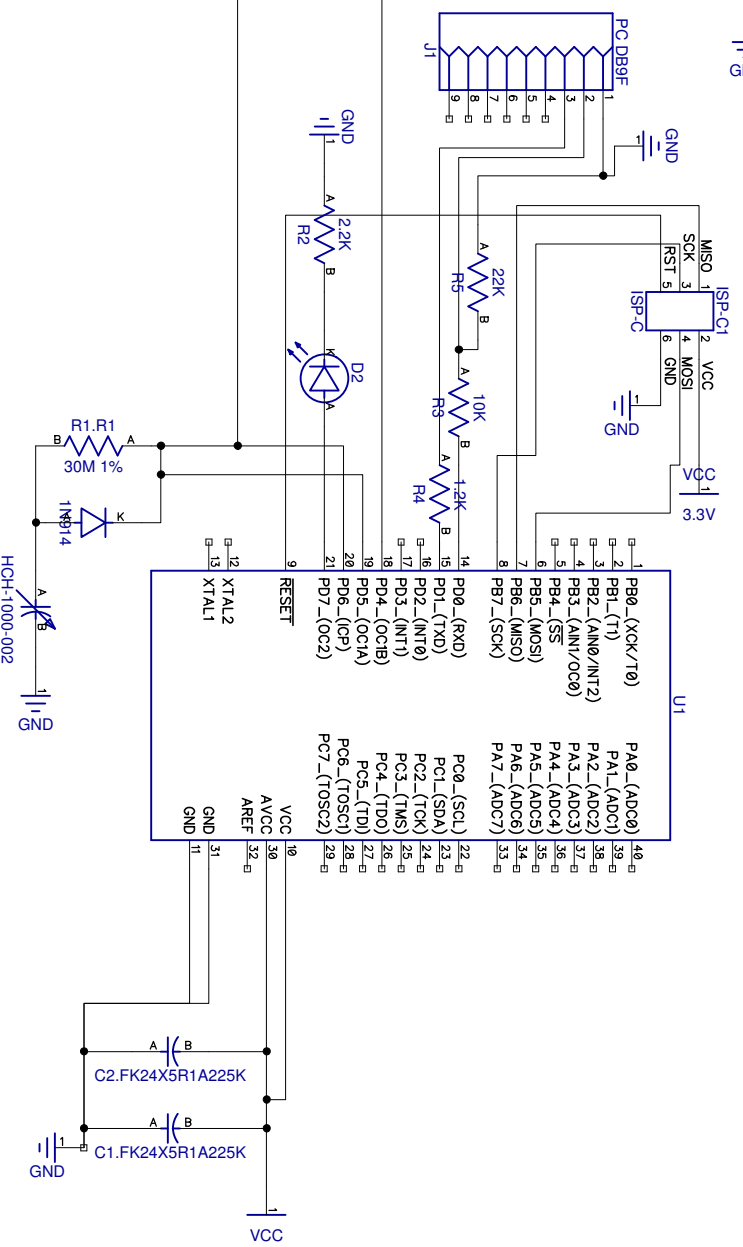
Power ripple capacitors not essential



Alternative Analog Compare Circuit

Directly Reads RC charge time using CPU which reduces parts cost and still gives readings which seem to jitter within 2.0% which is within the accuracy of most sensors.

DB9 allows test reading to be sent to PC



Var Capacitor Timing Circuit

Sense PD.5 until reads 0, give few ms to finish drain.
 Turn PD.6 on and inc counter in tight loop until PD.5 reads as On
 Calibrate by reading count at 33%, 76%, 100%
 Acts like AC wave because PD.6 only remains on long enough
 PD.5 to read on. Change value of charge resistor for different sensors.
 Diode discharges sensor fast when PD.6 drops. Use low forward Volt drop

Design Services Available

info@correctenergysolutions.com

m168-test-capacitor-rc-timing-direct.bas